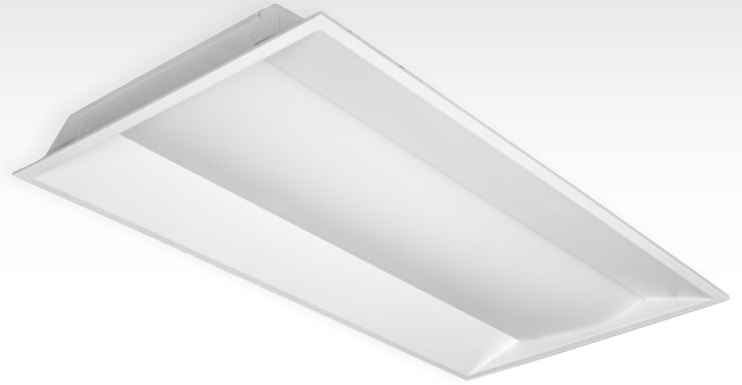


LED Office Troffer

Sleek, versatile LED Office Troffer is ideal for indoor environments where presentation and visual comfort are at a premium. Quality steel construction is designed to maximize heat distribution and cool operation. The uniquely attractive 10.25" wide-bodied diffuser basket provides a highly uniform light distribution and pleasing aesthetic appeal. Corporate offices, retail outlets, indoor galleries, and other high end installations use the LED Office Troffer to minimize energy consumption while improving their lighting environment and professional image.



Optics

The LED Office Troffer is available in color temperatures of 4000K and 5000K. The luminaire's 85+ CRI is ideal for professional indoor illumination, especially in environments requiring visual accuracy including office, design, manufacturing, or service.

Electrical

The luminaire outputs at an excellent efficacy of 126 Lm/W or greater with THD <10%. 20W, 30W, and 40W units are available. The fixture's has an excellent L70 lifespan rated for 156,000 hours. Input voltage is a standard 120-277VAC.

Construction

The LED Troffer's discreet, low-profile frame is fitted from sheet metal, and uses an efficient polycarbonate lens. The frosted diffuser is used to enhance consistency of light distribution. The slim design allows for versatile placement of the luminaire, even when recessed mounting is not available.

Mounting

The LED Troffer can be recessed in any standard sized grid ceiling. In non-grid type ceilings, the fixture may be installed via surface mount. Because of the fixtures slim profile, both mounting solutions are easily incorporated into interior design solutions.

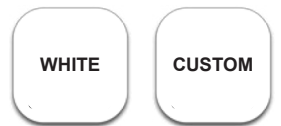
Standard Features



Options



Finish



LED Office Troffer

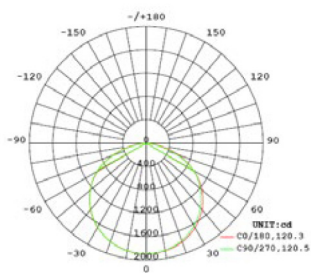
Sample Order: RTUS22-30W-4K

Series	Dimension	Wattage	CCT	Options
RTUS = Recessed Troffer (US Standard)	22 = 2x2 24 = 2x4	-30 = 30W -40 = 40W	-4K = 4000K -5K = 5000K	LOD = Bi-Level Sensor EOP = Office On/Off Sensor EM = Emergency Backup Battery

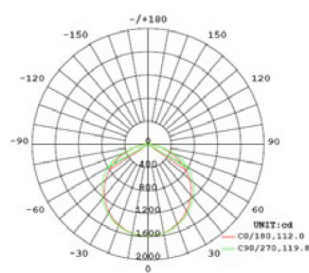
Performance Data

Part No.	Watts (W)	Input Voltage (VAC)	Efficacy (Lm/W)	Lumens(Lm)	CRI	CCT (K)	PF	THD	L70 (Hours)	Dimensions in Inches (L*W*H)
RTUS14-30W	30	120-277	128	3840	85+	4000 5000	>0.9	<10%	156,000	23.74*23.74*3.09
RTUS22-30W	30	120-277	135	4100	85+	4000 5000	>0.9	<10%	156,000	23.74*23.74*3.09
RTUS22-40W	40	120-277	126	5100	85+	4000 5000	>0.9	<10%	156,000	23.74*23.74*3.09
RTUS24-30W	30	120-277	129	3900	85+	4000 5000	>0.9	<10%	156,000	23.74*47.72*3.09
RTUS24-40W	40	120-277	127	5100	85+	4000 5000	>0.9	<10%	156,000	23.74*47.72*3.09

Color	Housing	Lens Type	Certification	Warranty
Matte White	Sheet Metal & PC Diffuser	Frosted	ETL	10 Years



RTUS22-40W



RTUS24-40W

