

UV/White LED Stretchview Lighted Magnifier Series

White + UV combination LED board allows for both component part and conformal coating inspection with use of the same light fixture. The combination light source within this single lighted magnifier increases productivity by allowing the operator to perform two separate inspection tasks without leaving their workstation. Easily view uniformity and presence of defects from dewetting, bubbles and voids, cracks and ripples, orange peel, and inadequate coverage.

Benchtop space, maintenance, and the budget expense for inspection lamps are cut in half by use of this single, dual purpose magnifier.

The wide field of view optical grade clear glass makes viewing easy and comfortable for the operator, allowing for longer periods of accurate and productive inspection. The supporting arm stays in position without bouncing or drifting. There are no external springs to collect dirt or debris from the environment.



The Ultimate Lighted Magnifier

White + UV LED's – conveniently toggle between white daylight illumination for inspecting small details and presence of defects and long wave UV for inspecting applied conformal coating

Unsurpassed Clarity – wide-view, distortion free crown optical grade glass lens for crystal clear magnification

Floating Arm Technology - features Dazor's patented floating adjustable arm for smooth, easy and steady positioning of the lamp to any position

Energy Efficient - 30% more energy efficient than a standard 18W Stretchview fluorescent bulb

Shade - dissipates heat and allows the magnifier to operate at a cool temperature - especially important in close operating proximity

Mounting Options –Weighted base or sturdy dual clamp mount

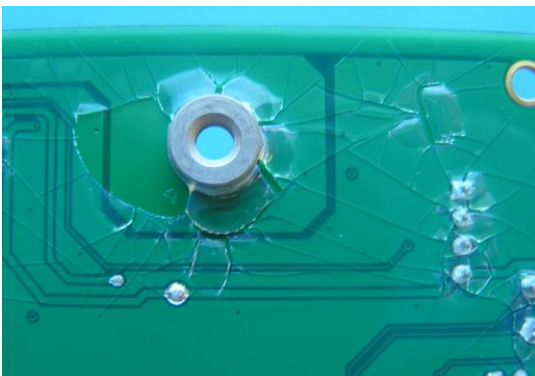
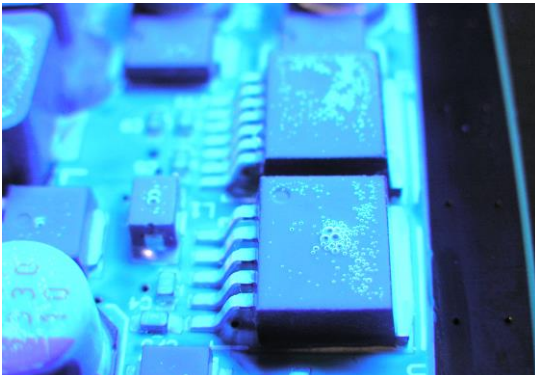
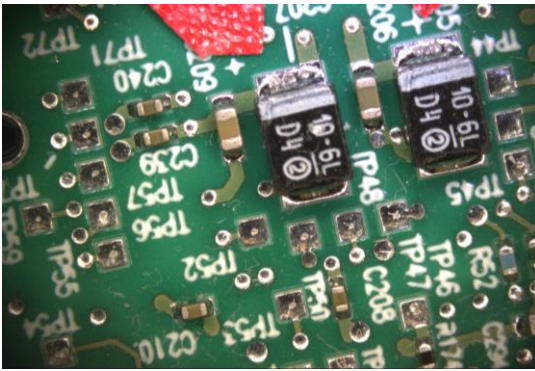
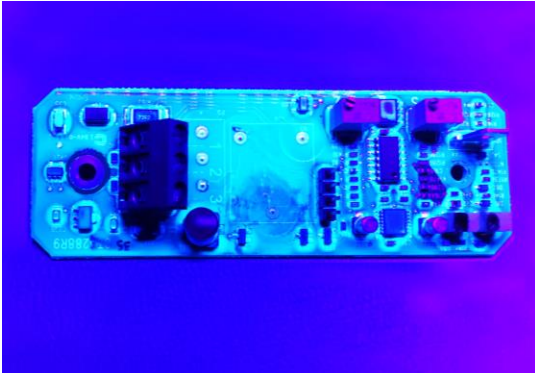
Quality Workmanship

Built to Last - 50,000 hr rated LED life with interchangeable electrical parts for easy replacement for years of worry free operation

Low Maintenance - no filaments, no bulb burn out, no bulb breakage, no bulb replacement, lowest lifetime maintenance of any light source

Durable Construction – Time tested construction for durability – suitable for high use environments

Professional Grade Quality - Made in the USA of high quality materials with a 5-year limited warranty



Lens Options



3-diopter
1.75X
13" working distance
6.75 X 4.25"



5-diopter
2.25X
8" working distance
3 X 5"



16-diopter
5X
2.5" working distance
3" circle

Specifications	
Lumens	1300
Power Consumption	11W
Color Temperature	6500K/400nm
Input Voltage	100V-240VAC
	DC50/60Hz
Output Voltage	24V DC
CRI (White LEDs)	92+

Light Output



White 6500K LEDs



UV 400nm LEDs



ESD-SAFE



Model Number	Magnification	Reach	Base
LMR105-ES-EB	3-diopter	28"	Weighted Base
LMR105-ES-5-EB	5-diopter	28"	Weighted Base
LMR105-ES-16-EB	16-diopter	28"	Weighted Base
LMR155-ES-EB	3-diopter	28"	Clamp Base
LMR155-ES-5-EB	5-diopter	28"	Clamp Base
LMR155-ES-16-EB	16-diopter	28"	Clamp Base
LMR205-ES-EB	3-diopter	42"	Clamp Base
LMR205-ES-5-EB	5-diopter	42"	Clamp Base
LMR205-ES-16-EB	16-diopter	42"	Clamp Base