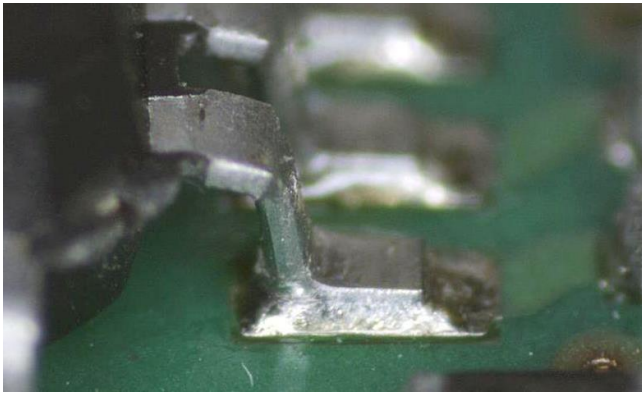


High Definition Magnification System



The speckFINDER CS 3.0 High-Definition Compact Magnification and Imaging System completely integrates the technologies of high quality variable zoom optics, digital imaging, and superior lighting with the most advanced computer technology into a completely integrated, user-friendly high definition video microscope.

The speckFINDER CS 3.0 produces exceptional images at the highest levels of optical magnification for crystal clear viewing, imaging and detailed comparison. The system allows for capturing and sharing of high definition images for inspection, overlay and editing, case file documentation, group viewing, training and consultation.

**System Magnification**

Variable Zoom Lenses*	Working Distance	System Magnification		FOV (mm) at Mag	
		Min	Max	Min	Max
N7	127mm	3X	19X	7mm	41mm
N7	4'	.25X	1.6X	81mm	508mm
V1	95mm	8.6X	35X	4mm	16mm
V1 + 0.5X	190mm	4.3X	17.5X	8mm	32mm
N05	95mm	6X	39X	3.3mm	22mm
N05 + 0.5X	190mm	3X	19.5X	6.6mm	44mm
N05 + 2.0X	48mm	12X	78X	1.65mm	11mm

\*Fixed telecentric lenses also available – please call for more information

**Computer**

- Intel® Baytrail Celeron J1900 2.0GHz, 8GB RAM
- MSATA 128G drive
- Windows 7 Professional operating system
- High definition 1024 x 768 17cm TFT active matrix 16.7 million true color display, anti-reflective, 0.129 square pixel pitch, 200 PPI, 600:1 contrast ratio
- 3X USB 2.0 ports, 15-pin VGA, HDMI, and Cat 5 outputs
- Wireless LAN mini PCI-E card and antenna WIFI cable set for high performance internet connectivity, IEEE 802, 11 b/g/n compliant

**USB High-Resolution Camera**

- An especially high-performing and versatile professional grade USB 3.0 camera for sharp images and high definition live video at the highest magnification levels
- High definition 1360 x 1024 ½" Interline CCD color optical sensor, 4.6µ square pixels, 30 fps image processing speed
- Ability to control multiple functions including area of interest, gain, exposure, frame rate, digital output delay and duration

**Video Toolbox Pro Software**

- Capture and save still images and live video
- Overlay capabilities
- Multiple preset calibration settings
- Set-up individualized user profiles
- Manual or auto control of camera

**Dimmable LED Ring Light**

- Even, focused shadow-free illumination
- 80 bright white LED bulbs
- Variable intensity control
- Heavy-duty control box

## Mounting Options

### 27" Articulating Arm

The 27" articulating arm is the ideal solution for small work stations.

Arm and mount allow the speckFINDER unit to be moved out of position to free up valuable work space when not in use.



### Dual Arm Boom Stand

Ball-bearing dual-arm boom stand allows users to make refined multi-directional adjustments once the primary optic is adjusted.

Base provides maximum image stabilization and fine focusing abilities at high levels of magnification.



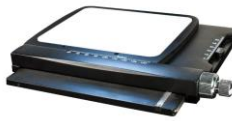
## Upgrades and Accessories

On-Site Training Available



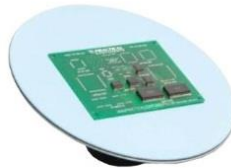
### Flex LED Arms

Secondary spot LED lights with to highlight hard to see details



### Micro-Positioning XY Inspection Table

Allows for fine object movement in the XY plane under high magnification



### Orbital Table

ESD Safe weighted orbital table for 3-dimensional angled viewing of objects



### Triple Locking XY Inspection Table

ESD Safe with ball-bearing slides provide smooth and easy positioning anywhere in the X-Y plane



### Mobile Floor Stand

Heavy-duty 5 caster floor stand provides a stable mobile work station. Floor stand includes five locking casters, adjustable keyboard and mouse shelves, sturdy adjustable height bracket and convenient handle for ease of mobility.

Requires speckFINDER CS 3.0 mounted on 27" arm.

### N7 Interchangeable Lens Options

Close-focusing macro video lens with a working distance of 5 inches to infinity. This versatile lens was specifically designed for use in applications where objects over 1" in diameter must be viewed. Unsurpassed clarity and parfocal zoom capabilities over the entire zoom range. Manual control of focus, aperture and magnification adjustments are standard.

### V1

Precision variable zoom lens produces optical system magnification of 8.6X - 35X, field of view range of 16mm - 4mm, and 95mm working distance. Manual control of focus, aperture and magnification adjustments are standard.



### "Smart" Control LED Ring Light

80 LED dual row LED ring light (two 6000K white), "Smart" control through wireless mouse and software. Control intensity and directionality down to a single LED.

80 LED dual row (one 6000K white + one UV) LED ring light, "Smart" control through wireless mouse and software. Control intensity and directionality down to a single LED.



### 0.5X Lens Extender

Increases FOV and decreases magnification range

### 2.0X Lens Extender

Decreases FOV and increases magnification range

### Warranty Options

- One Year Standard
- One Year Extended
- Two Year Extended

# SpeckFINDER CS 3.0



## LENS OPTIONS

WIDE FIELD OF VIEW	N7
HIGH MAGNIFICATION ZOOM LENS	V1
METROLOGY ZOOM LENS	N05

## MOUNTING OPTIONS

DUAL ARM BOOM MOUNT	BM1
27" ARM - CLAMP MOUNT	27A

Lens	Mount	Part Number	Description
N7	27A	CS3-N7-27A	speckFINDER 3.0, N7 Lens, 27" Articulating Arm
N7	BM1	CS3-N7-BM1	speckFINDER 3.0, N7 Lens, Boom Mount
V1	BM1	CS3-V1-BM1	speckFINDER 3.0, V1 Lens, Boom Mount
N05	BM1	CS3-N05-BM1	speckFINDER 3.0, N05 Lens, Boom Mount

## ACCESSORIES

Part Number	Description
<b>Interchangeable Lens Options</b>	
SPECK-HD-N7	Navitar 7000 Parfocal Lens
SPECK-HD-V1	High Magnification Zoom Lens (Boom Mount only)
SPECK-HD-VZL05	0.5X Extender for V1 Lens
SPECK-HD-N05	Metrology Zoom Lens (Boom Mount only)
SPECK-HD-NE05	0.5X Extender for N05 Lens
SPECK-HD-NE2	2X Extender for N05 Lens
<b>Mounting and Inspection Table Options</b>	
TBL100	Micro-Positioning XY Inspection Table
TBL200-BK	Triple Locking XY Inspection Table
TBL3D-250	Orbital Table
SPECK-1050PRO	Mobile Floor Stand (for use with 27" arm only)
<b>Lighting Options</b>	
SPECK-HD-LFA	LED Flex Arms
SPECK-HD-LRD	Dimmable LED Ring Light (standard)
SPECK-HD-LRS1	Dual Row (White + White) LED Ring Light
SPECK-HD-LRS2	Dual Row (White + UV) LED Ring Light
<b>Extended Warranties and Training</b>	
SPECK-HD-WARR-1	1 Year Extended Warranty
SPECK-HD-WARR-2	2 Year Extended Warranty
SPK-TRAIN-1	On-Site Training *per day + travel related expenses

